

Pizza Oven/BBQ Grill/Fired Pit
PRODUCT CATALOG



OUR MISSION

Our Design
Your Business
We Help

- ◆ BBQ Products Design & Development
- ◆ Manufacturing
- ◆ Quality Control & Laboratory Test
- ◆ Sourcing
- ◆ Logistics & Warehouse Services
- ◆ Price Negotiation

Hemisphere Type

Clay Pizza Oven



SKU: CLAY-G-800-1

- Product : Tabletop Version Gas Type Clay Pizza Oven
- Cooking Area: $\Phi 27.6''$ ($\Phi 70\text{cm}$)
- Warm-up time: 15-20 mins
- Max temp: 932°F (500°C)(test)
- Fuel Type: Gas
- Product Size: 33.3×36.1×44.7'' (85cm×92cm×114cm)
- Net Weight: 183 lbs (83kg)

Hemisphere Type

Clay Pizza Oven

**You can choose gas type
or wood-fired for your oven**



SKU: CLAY-G-800-1-B1

- Product : Gas Type Clay Pizza Oven
- Cooking Area: $\Phi 27.6''$ ($\Phi 70\text{cm}$)
- Warm-up time: 15-20 mins
- Max temp: 932°F (500°C)(test)
- Fuel Type: Gas
- Product Size: 47.2×40.2×82.7" (120cm×102cm×210cm)
- Net Weight: 240.3 lbs (109kg)

Hemisphere Type

Clay Pizza Oven

SKU: CLAY-G-600-1



- Product : Tabletop Version Gas Type Clay Pizza Oven
- Cooking Area: $\Phi 20''$ ($\Phi 51\text{cm}$)
- Warm-up time: 15-20 mins
- Max temp: 932°F (500°C)(test)
- Fuel Type: Gas
- Product Size: 25.2×27.3×36.7" (64cm×69cm×93cm)
- Net Weight: 83.8lbs (38kg)

Hemisphere Type

Clay Pizza Oven



**SKU:
CLAY-G-600-1-B1**

**You can choose different
colors for your oven**



Product : Gas Type Clay Pizza Oven

Cooking Area: $\Phi 20''$ ($\Phi 51\text{cm}$)

- Warm-up time: 15-20 mins
- Max temp: 932°F (500°C)(test)
- Fuel Type: Gas
- Product Size: 66.9×39.8×36.6" (170cm×101cm×93cm)
- Net Weight: 132.3lbs (60kg)

Hemisphere Type

Clay Pizza Oven



SKU: CLAY-W-800-1

- Product : Wood-Fired Clay Pizza Oven
- Cooking Area: $\Phi 27.6''$ ($\Phi 70\text{cm}$)
- Warm-up time: 15-20 mins
- Max temp: 932°F (500°C)(test)
- Fuel Type: Wood/Charcoal/Pellet
- Product Size: 33.5×35.3×43'' (85cm×90cm×110cm)
- Net Weight: 136.7lbs (62kg)

Hemisphere Type

Clay Pizza Oven



SKU: CLAY-W-800-1-B1

- Product : Wood-Fired Clay Pizza Oven
- Cooking Area: $\Phi 27.6''$ ($\Phi 70\text{cm}$)
- Warm-up time: 15-20 mins
- Max temp: 932°F (500°C)(test)
- Fuel Type: Wood/Charcoal/Pellet
- Product Size: $47.2 \times 40.2 \times 82.7''$ ($120\text{cm} \times 102\text{cm} \times 210\text{cm}$)
- Net Weight: 194 lbs (88kg)

Hemisphere Type

Clay Pizza Oven

SKU:

CLAY-W-600-2-B1

Lightweight

Excellent Insulation

No Crack



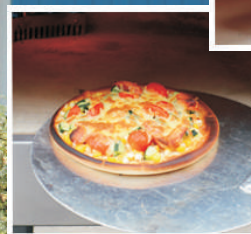
- Product : Wood-Fired Clay Pizza Oven
- Cooking Area: $\Phi 20''$ ($\Phi 51\text{cm}$)
- Warm-up time: 15-20 mins
- Max temp: 932°F (500°C)(test)
- Fuel Type: Wood/Charcoal/Pellet
- Product Size: 66.9×38.8×36.4" (170cm×98.5cm×92.4cm)
- Net Weight: 111.9lbs (50.77kg)

Hemisphere Type

Clay Pizza Oven

SKU:
CLAY-G-800-2-B2
Lightweight
Excellent Insulation
No Crack

OVENDESIGN
欧文厨具



- Product : Gas Type Clay Pizza Oven
- Cooking Area: $\Phi 26''$ ($\Phi 65\text{cm}$)
- Warm-up time: 15-20 mins
- Max temp: 1112°F (600°C)(test)
- Fuel Type: Gas
- Product Size: 31.5×25×73" (80cm×64cm×185cm)
- Net Weight: 266lbs (124kg)

Hemisphere Type

Clay Pizza Oven



SKU: NLT800

- Product : Wood-fired Clay Pizza Oven
- Cooking Area: $\Phi 32''$ ($\Phi 80\text{cm}$)
- Warm-up time: 20-30 mins
- Max temp: 1112°F (600°C)(test)
- Fuel Type: Wood/Charcoal/Pellet
- Product Size: 35×32×72" (89cm×80cm×183cm)
- Net Weight: 266lbs (121kg)

Hemisphere Type

Clay Pizza Oven



Customize The Exclusive Finish Type

Dissatisfied with the current finish type? We can customize the exclusive finish type to match your venue and taste.

- Product : Wood-fired Clay Pizza Oven
- Cooking Area: $\Phi 32''$ ($\Phi 80\text{cm}$)
- Warm-up time: 20-30 mins
- Max temp: 1112°F (600°C)(test)
- Fuel Type: Wood/Charcoal/Pellet
- Product Size: $35 \times 32 \times 72''$ ($89\text{cm} \times 80\text{cm} \times 183\text{cm}$)
- Net Weight: 266lbs (121kg)

Portable Type

QQ Pizza Oven

Available in 2 sizes: 12" & 16"



SKU: QQ-G-H-4

- Product : Free Installation Portable Gas Pizza Oven With U-shape Fire Row Burning
- Cooking Area: 12×12" (30.5cm×30.5cm)/16×16" (40cm×40cm)
- Warm-up time: 5-10 mins
- Max temp: 932°F (500°C)(test)
- Fuel Type: Gas
- Product Size: 18.6×16.7×14.6" (47.1cm×42.4cm×37.1cm)/
23.3×20.2×16.3" (59cm×51.4cm×41.3cm)
- Net Weight: 26 lbs (11.8 kg)/38.1 lbs (17.3kg)

Portable Type

QQ Pizza Oven

SKU: QQ-M1-H-1 Gas & Pellets 2 in 1



- Product : Portable Mixed Material Detachable Multi-Fuel (Gas/Pellets) Pizza Oven
- Cooking Area: 13×13" (33cm×33cm) / 16×16" (40cm×40cm)
- Warm-up time: 5-10 mins
- Max temp: 932°F (500°C)(test)
- Fuel Type: Gas
- 13" Product Size:
Gas:31.6×16.7×32.5" / Wood-fire: 28.7×16.7×32.5"
(Gas:80.3cm×42.5cm×82.5cm/ Wood-fire:72.8cm×42.5cm×82.5cm)
- Net Weight: 13": 34.4lbs (15.6kg)

Portable Type

QQ Pizza Oven

SKU:

QQ-W-HD-1

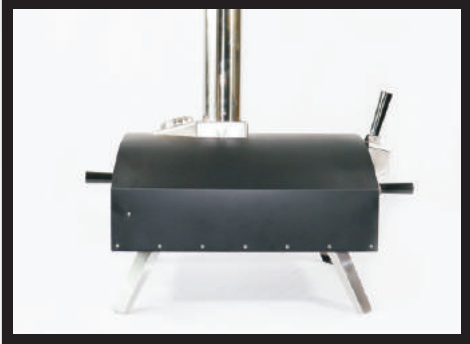


- Product : Drawer Type Portable Mixed Material Wood-Fired Outdoor Pizza Oven
- Cooking Area: 13×13" (33cm×33cm)
- Warm-up time: 5-10 mins
- Max temp: 932°F (500°C)(test)
- Fuel Type: Wood/Charcoal/Pellet
- Product Size: 31.1×28.7×16.1" (79cm×73cm×41cm)
- Net Weight: 33lbs (15kg)

Portable Type

QQ Pizza Oven

SKU: QQ-W-H-1



- Product : Portable Mixed Material Wood-Fired Outdoor Pizza Oven
- Cooking Area: 13×13" (33cm×33cm)
- Warm-up time: 5-10 mins
- Max temp: 932°F (500°C)(test)
- Fuel Type: Wood/Charcoal/Pellet
- Product Size: 31.7×28.6×16.1" (80.4cm×72.7cm×41cm)
- Net Weight: 29.7lbs (13.5kg)

Portable Type

QQ Pizza Oven

Available in 2 sizes



SKU: QQ-G-P-3

- Product : Free Standing Portable Gas Powered Outdoor Pizza Oven
- Cooking Area: 13×13" (33cm×33cm)/16×16" (40cm×40cm)
- Warm-up time: 5-10 mins
- Max temp: 932°F (500°C)(test)
- Fuel Type: Gas
- Product Size: 16.1×27.4×13.7" (41cm×69.5cm×34.7cm)/
19×30.9×16" (48.5cm×78.5cm×40.7cm)
- Net Weight: 25.2lbs (11.45 kg)/37.4lbs (16.97kg)

Portable Type

QQ Pizza Oven



SKU: QQ-G-PR-3

- Product : 16 Inch Outdoor Gas Pizza Oven With Rotating Pizza Stone
- Cooking Area: Φ 16" (Φ 40cm)
- Warm-up time: 3-5 mins
- Max temp: 932°F (500°C)(test)
- Fuel Type: Gas
- Product Size: 29.5×23.2×16.5" (75cm×59cm×42cm)
- Net Weight: 45.4 lbs (20.6kg)

Portable Type

QQ Pizza Oven



SKU: QQ-G-PD-3

- Product : Drawer Type Portable Gas Powered Outdoor Pizza Oven
- Cooking Area: 13×13" (33cm×33cm)
- Warm-up time: 3-5 mins
- Max temp: 932°F (500°C)(test)
- Fuel Type: Gas
- Product Size: 27.95×17.2×13.6" (71cm×43.8cm×34.6cm)
- Net Weight: 29.9lbs (13.56kg)

Portable Type

QQ Pizza Oven



SKU: QQ-GE-PR-3

- Product : 16 Inch Outdoor Gas Pizza Oven With Electric Rotation Pizza Stone
- Cooking Area: Φ 16" (Φ 40cm)
- Warm-up time: 3-5 mins
- Max temp: 932°F (500°C)(test)
- Fuel Type: Gas
- Product Size: 29.5×26.4×16.5" (75cm×67cm×42cm)
- Net Weight: 48.5 lbs (22kg)

Portable Type

QQ Pizza Oven

SKU: QQW-1-S



- Product : Portable Wood-Fired Outdoor Stainless steel Pizza Oven
- Cooking Area: 13×13" (33cm×33cm)
- Warm-up time: 5-10 mins
- Max temp: 932°F (500°C)(test)
- Fuel Type: Wood/Charcoal/Pellet
- Product Size: 31.7×28.6×16.1" (80.4cm×72.7cm×41cm)
- Net Weight: 29.7lbs (13.5kg)

Portable Type

QQ Pizza Oven



SKU: QQW-2-S

- Product : Portable Wood-Fired Outdoor Stainless steel Pizza Oven
- Cooking Area: 13×13" (33cm×33cm)
- Warm-up time: 5-10 mins
- Max temp: 932°F (500°C)(test)
- Fuel Type: Wood/Charcoal/Pellet
- Product Size: 31.7×28.6×16.1" (80.4cm×72.7cm×41cm)
- Net Weight: 29.7lbs (13.5kg)

Portable Type

QQ Pizza Oven



SKU: QQG-1-S

- Product : Portable Gas Powered Outdoor Stainless Steel Pizza Oven
- Cooking Area: 13×13" (33cm×33cm)
- Warm-up time: 3-5 mins
- Max temp: 932°F (500°C)(test)
- Fuel Type: Gas
- Product Size: 30.9×29.7×16.1" (78.5cm×75.4cm×41cm)
- Net Weight: 30.6lbs (13.9kg)

Portable Type

QQ Pizza Oven

SKU: QQG-2-S

OVENDESIGN
欧文厨具



- Product : Portable Gas Powered Outdoor Stainless Steel Pizza Oven
- Cooking Area: 13×13" (33cm×33cm)
- Warm-up time: 3-5 mins
- Max temp: 932°F (500°C)(test)
- Fuel Type: Gas
- Product Size: 30.9×29.7×16.1" (78.5cm×75.4cm×41cm)
- Net Weight: 30.6lbs (13.9kg)

Portable Type

QQ Pizza Oven



SKU: QQ-W-SD-2

- Product : Portable Wood-Fired Pizza Oven With Pull-Out Drawer
- Cooking Area: 13×13" (33cm×33cm)
- Warm-up time: 5-10 mins
- Max temp: 932°F (500°C)(test)
- Fuel Type: Wood/Charcoal/Pellet
- Product Size: 31.7×28.6×16.1" (80.4cm×72.7cm×41cm)
- Net Weight: 31.1 lbs (14.11kg)

Portable Type

QQ Pizza Oven



SKU: QQ-G-SD-2

- Product : Portable Gas Powered Pizza Oven With Pull-Out Drawer
- Cooking Area: 13×13" (33cm×33cm)
- Warm-up time: 5-10 mins
- Max temp: 932°F (500°C)(test)
- Fuel Type: Gas
- Product Size: 30.9×29.7×16.1" (78.5cm×75.4cm×41cm)
- Net Weight: 30.47lbs (13.85kg)

Portable Type

QQ Pizza Oven



SKU: QQ-W-SF-2

- Product : Portable Wood-Fired Outdoor Stainless Steel Pizza Oven
- Cooking Area: 13×13" (33cm×33cm)
- Warm-up time: 5-10 mins
- Max temp: 932°F (500°C)(test)
- Fuel Type: Wood/Charcoal/Pellet
- Product Size: 31.7×28.6×16.1" (80.4cm×72.7cm×41cm)
- Net Weight: 29.6lbs (13.48kg)

Portable Type

QQ Pizza Oven



SKU: QQW-1

You can choose different colors for your oven

- Product : Portable Wood-Fired Outdoor Pizza Oven
- Cooking Area: 13×13" (33cm×33cm)
- Warm-up time: 5-10 mins
- Max temp: 932°F (500°C)(test)
- Fuel Type: Wood/Charcoal/Pellet
- Product Size: 31.7×28.6×16.1" (80.4cm×72.7cm×41cm)
- Net Weight: 31.3lbs (14.2kg)

Portable Type

QQ Pizza Oven



SKU: QQG-1

It is lightweight only 14 KG and portable with collapsible bracket, easy to carry and store.

- Product : Portable Wood-Fired Outdoor Pizza Oven
- Cooking Area: 13×13" (33cm×33cm)
- Warm-up time: 5-10 mins
- Max temp: 932°F (500°C)(test)
- Fuel Type: Gas
- Product Size: 30.9×29.7×16.1" (78.5cm×75.4cm×41cm)
- Net Weight: 31.3lbs (14.2kg)

Portable Type

QQ Pizza Oven



SKU: QQ-M1-P-1
Gas & Pellets 2 in 1

- Product : Detachable Multi-Fuel (Gas/Pellets) Portable Pizza Oven
- Cooking Area: 13×13" (33cm×33cm) / 16×16" (40cm×40cm)
- Warm-up time: 5-10 mins
- Max temp: 932°F (500°C)(test)
- Fuel Type: Gas
- 13" Product Size:
Gas:31.6×16.7×32.5" / Wood-fire: 28.7×16.7×32.5"
(Gas:80.3cm×42.5cm×82.5cm/ Wood-fire:72.8cm×42.5cm×82.5cm)
- Net Weight: 13": 34.4lbs (15.6kg)

Portable Type

QQ Pizza Oven

SKU: QQW-2



- Product : Portable Wood-Fired Outdoor Pizza Oven
- Cooking Area: 13×13" (33cm×33cm)
- Warm-up time: 5-10 mins
- Max temp: 932°F (500°C)(test)
- Fuel Type: Wood/Charcoal/Pellet
- Product Size: 31.7×28.6×16.1" (80.4cm×72.7cm×41cm)
- Net Weight: 30.4lbs (13.8kg)

Portable Type

QQ Pizza Oven

SKU: QQG-2



- Product : Portable Gas Powered Outdoor Pizza Oven
- Cooking Area: 13×13" (33cm×33cm)
- Warm-up time: 3-5mins
- Max temp: 932°F (500°C)(test)
- Fuel Type: Gas
- Product Size: 30.9×29.7×16.1" (78.5cm×75.4cm×41cm)
- Net Weight: 30.6lbs (13.9kg)

Portable Type

QQ Pizza Oven

SKU: QQ-W-PF-2



- Product : Portable Wood-Fired Outdoor Pizza Oven
- Cooking Area: 13×13" (33cm×33cm)
- Warm-up time: 5-10 mins
- Max temp: 932°F (500°C)(test)
- Fuel Type: Wood/Charcoal/Pellet
- Product Size: 31.7×28.6×16.1" (80.4cm×72.7cm×41cm)
- Net Weight: 30.1 lbs (13.66kg)

Portable Type

QQ Pizza Oven

SKU: QQ-G-PD-2



- Product : Drawer Type Portable Gas Powered Outdoor Pizza Oven
- Cooking Area: 13×13" (33cm×33cm)
- Warm-up time: 3-5 mins
- Max temp: 932°F (500°C)(test)
- Fuel Type: Gas
- Product Size: 30.9×29.7×16.1" (78.5cm×75.4cm×41cm)
- Net Weight: 31.35lbs (14.22kg)

Portable Type

QQ Pizza Oven

SKU: QQ-W-PD-2



- Product : Drawer Type Portable Wood-Fired Outdoor Pizza Oven
- Cooking Area: 13×13" (33cm×33cm)
- Warm-up time: 5-10 mins
- Max temp: 932°F (500°C)(test)
- Fuel Type: Wood/Charcoal/Pellet
- Product Size: 31.7×28.6×16.1" (80.4cm×72.7cm×41cm)
- Net Weight: 32.1lbs (14.6kg)

Portable Type

QQ Pizza Oven



SKU: QQ-G-S-3

- Product : Free Standing Portable Gas Powered Outdoor Pizza Oven
- Cooking Area: 13×13" (33cm×33cm)
- Warm-up time: 5-10 mins
- Max temp: 932°F (500°C)(test)
- Fuel Type: Gas
- Product Size: 16.1×27.4×13.7" (41cm×69.5cm×34.7cm)
- Net Weight: 25.2lbs (11.45 kg)

Portable Type

QQ Pizza Oven



SKU: QQ-G-SD-4

- Product : Portable Gas Powered Pizza Oven With Pull-Out Drawer
- Cooking Area: 13×13" (33cm×33cm)
- Warm-up time: 5-10 mins
- Max temp: 932°F (500°C)(test)
- Fuel Type: Gas
- Product Size: 31.1×31.1×16.1" (79cm×79cm×41cm)
- Net Weight: 30.47lbs (13.85kg)

Portable Type

QQ Pizza Oven



SKU: QQ-W-SD-4



- Product : Portable Wood-Fired Pizza Oven With Pull-Out Drawer
- Cooking Area: 13×13" (33cm×33cm)
- Warm-up time: 5-10 mins
- Max temp: 932°F (500°C)(test)
- Fuel Type: Wood/Charcoal/Pellet
- Product Size: 31.1×28.7×16.1" (79cm×73cm×41cm)
- Net Weight: 31.3lbs (14.2kg)

Portable Type

QQ Pizza Oven

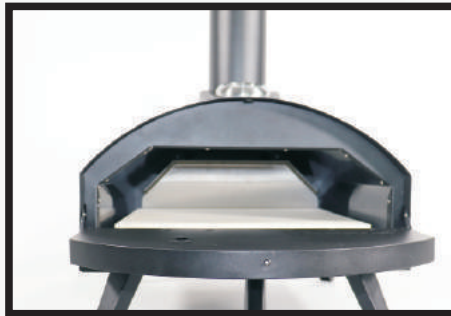
SKU: QQ-W-PD-4



- Product : Drawer Type Portable Wood-Fired Outdoor Pizza Oven
- Cooking Area: 13×13" (33cm×33cm)
- Warm-up time: 5-10 mins
- Max temp: 932°F (500°C)(test)
- Fuel Type: Wood/Charcoal/Pellet
- Product Size: 31.1×28.7×16.1" (79cm×73cm×41cm)
- Net Weight: 33lbs (15kg)

Portable Type

QQ Pizza Oven



SKU: QQ-W-PF-4

- Product : Portable Wood-Fired Outdoor Pizza Oven
- Cooking Area: 13×13" (33cm×33cm)
- Warm-up time: 5-10 mins
- Max temp: 932°F (500°C)(test)
- Fuel Type: Wood/Charcoal/Pellet
- Product Size: 31.1×28.7×16.1" (79cm×73cm×41cm)
- Net Weight: 30.1 lbs (13.66kg)

Portable Type

QQ Pizza Oven



**SKU:
QQ-WO-PF-4**

- Product : Portable Wood-Fired Outdoor Clay Pizza Oven
- Cooking Area: 13×13" (33cm×33cm)
- Warm-up time: 5-10 mins
- Max temp: 932°F (500°C)(test)
- Fuel Type: Wood/Charcoal/Pellet
- Product Size: 31.1×28.7×16.1" (80cm×73cm×43cm)
- Net Weight: 39.9lbs (18.11kg)

Portable Type

UFO Pizza Oven



SKU:UFO-G-P-1

- Product : Portable Gas Type Outdoor Pizza Oven
- Cooking Area: 12×12" (30.5cm×30.5cm)/16×16" (40cm×40cm)
- Warm-up time: 5-10 mins
- Max temp: 932°F (500°C)(test)
- Fuel Type: Gas
- Product Size:
 - 12" : 26.9×15.1×11.8" (68.2cm×38.4cm×30cm)
 - 16" : 29.5×18.5×13.1" (75cm×47cm×33.3 cm)
- Net Weight:
 - 12" : 20 lbs (9.1kg)/16" : 36.4 lbs (16.51kg)

Portable Type

UFO Pizza Oven



SKU:UFO-G-PR-1



16 inches



12 inches

- Product : Gas Type UFO Pizza Ovens With Rotating Pizza Stone
- Cooking Area: 12" : ϕ 30.5 cm/16" : ϕ 40 cm
- Warm-up time: 5-10 mins
- Max temp: 932°F (500°C)(test)
- Fuel Type: Gas
- Product Size:
 - 12" : 25.2 × 20.5 × 13" (64cm × 52cm × 33cm)
 - 16" : 30.1 × 25.6 × 14.6" (76.5cm × 65cm × 37cm)
- Net Weight: 12" : 25.3 lbs (11.46kg)/16" : 41.2 lbs (18.7kg)

Portable Type

UFO Pizza Oven



SKU:UFO-W-SP-3



- Product : Portable Wood-Fired Outdoor Pizza Oven
- Cooking Area: 12×12" (30.5cm×30.5cm)
- Warm-up time: 5-10 mins
- Max temp: 932°F (500°C)(test)
- Fuel Type: Wood/Charcoal/Pellet
- Product Size: 24.4×15.7×30.3" (62cm×40cm×77cm)
- Net Weight: 24.7 lbs (11.2kg)

Portable Type

CRAB Pizza Oven



SKU:CRAB-W-PB-1

- Product : Portable Wood-Fired Outdoor Pizza Oven With Blower
- Cooking Area: 13×13" (33cm×33cm)
- Warm-up time: 5-10 mins
- Max temp: 932°F (500°C)(test)
- Fuel Type: Wood/Charcoal/Pellet
- Product Size: 31.5×28.7×16.9" (80cm×73cm×43cm)
- Net Weight: 34 lbs (15.4kg)

Portable Type

SUV Pizza Oven



SKU: SUV-W-SB-1

- Product : Outdoor Portable Wood-Fire Pizza Oven With Blower
- Cooking Area: 13×13" (33cm×33cm)
- Warm-up time: 5-10 mins
- Max temp: 932°F (500°C)(test)
- Fuel Type: Wood/Charcoal/Pellet
- Product Size: 30.7×28×14.4" (78cm×71cm×37.2cm)
- Net Weight: 24.2lbs (11kg)

Portable Type

SUV Pizza Oven

SKU: SUV-W-SD-2



- Product : Outdoor Portable Wood-Fire Pizza Oven
- Cooking Area: 13×13" (33cm×33cm)
- Warm-up time: 5-10 mins
- Max temp: 572°F (300°C)(test)
- Fuel Type: Wood/Charcoal/Pellet
- Product Size: 33.7×33.2×16.6" (85.6cm×84.3cm×42.1cm)
- Net Weight: 35.3lbs (16kg)

Portable Type

SUV Pizza Oven

SKU: SUV-2



- Product : Outdoor Portable Wood-Fire Pizza Oven
- Cooking Area: 13×13" (33cm×33cm)
- Warm-up time: 5-10 mins
- Max temp: 572°F (300°C)(test)
- Fuel Type: Wood/Charcoal/Pellet
- Product Size: 30.7×28×14.4" (78cm×71cm×37.2cm)
- Net Weight: 24.2lbs (11kg)

Portable Type

SUV Pizza Oven

SKU: SUV-M1-S-1



- Product : Wood and Gas Burning 2 in 1 Portable Pizza Oven
- Cooking Area: 13×13" (33cm×33cm)
- Warm-up time: 2-10 mins
- Max temp: 572°F (300°C)(test)
- Fuel Type: Wood/Charcoal/Pellet/Gas
- Product Size: 32.7×28×14.6" (83cm×71cm×37cm)
- Net Weight: 35.2lbs (16kg)

Portable Type

SUV Pizza Oven

SKU: SUV-G-S-1



- Product : Gas Tpye Outdoor Pizza Oven
- Cooking Area: 13×13" (33cm×33cm)
- Warm-up time: 3-6mins
- Max temp: 752°F (400°C)(test)
- Fuel Type: Gas
- Product Size: 31.5×28×14.6" (80cm×71cm×37cm)
- Net Weight: 26.4lbs (12kg)

Portable Type

Outdoor Pizza Oven



SKU: FT-G-P-1

- Product : Black Knight Gas Type Circle Pizza Oven
- Cooking Area: $\Phi 19''$ ($\Phi 48.26\text{cm}$)
- Warm-up time: 5-10 mins
- Max temp.: 752°F (400°C)(test)
- Fuel Type: Gas
- Product Size: 36.2×32.5×30.3" (92cm×82.5cm×77cm)
- Net Weight: 56.88lbs (25.8kg)

Portable Type

Outdoor Pizza Oven



SKU: FTG-1

- Product : Gas Type Circle Pizza Oven
- Cooking Area: Φ 16.5" (Φ 42cm)
- Warm-up time: 2-5 mins
- Max temp.: 752°F (400°C)(test)
- Fuel Type: Gas
- Product Size: 26×24×38" (99cm×73.6cm×87.7cm)
- Net Weight: 52.8lbs (24kg)

Portable Type

Outdoor Pizza Oven



SKU: PBOXDG-2

- Product : Drawer Type Gas Outdoor Pizza Oven
- Cooking Area: 13×13" (33cm×33cm)
- Warm-up time: 3-8 mins
- Max temp: 842°F (450°C)(test)
- Fuel Type: Gas
- Product Size: 17.32×15×10.5" (68cm×46cm×37cm)
- Net Weight: 43lbs (19.6kg)

Bulid-In Type

Pizza Box



SKU: PBOX-1



- Product : Bulit-In Type Pizza Box
- Cooking Area: 12×12" (30cm×30cm)
- Warm-up time: 5-10 mins
- Max temp: 752°F (400°C)(test)
- Fuel Type: No
- Product Size: 14×16×5.7" (35cm×40cm×14.5cm)
- Net Weight: 14.8lbs (6.72kg)

Bulid-In Type

Pizza Box

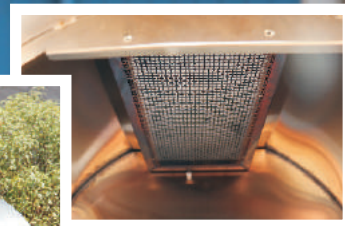
SKU: PBOX-2



- Product : Bulit-In Type Pizza Box
- Cooking Area: 12×12" (30cm×30cm)
- Warm-up time: 5-10 mins
- Max temp: 752°F (400°C)(test)
- Fuel Type: No
- Product Size: 14×16×5.7" (35cm×40cm×14.5cm)
- Net Weight: 14.8lbs (6.72kg)

Desktop Type

Outdoor Pizza Oven



SKU: MHG-1

- Product : Upper Infrared Burner Outdoor Pizza Oven
- Cooking Area: 13×17" (31cm×44cm)
- Warm-up time: 1-3 mins
- Max temp: 752°F (400°C)(test)
- Fuel Type: Gas
- Product Size: 23.6×20×15.8" (60cm×51cm×40cm)
- Net Weight: 38.5lbs (17.5kg)

Desktop Type

Barbecue Grill



OVENDESIGN
歐文廚具

SKU: NPG-4

- Product : Outdoor Infrared Burner Beef Barbecue Grill
- Cooking Area: 14.2×11.4" (36cm×29cm)
- Warm-up time: 1-3 mins
- Max temp: 1292°F (700°C)(test)
- Fuel Type: Gas
- Product Size: 20.9×17.7×12.4" (53cm×45cm×31.5cm)
- Net Weight: 33.5lbs (15.2kg)

Desktop Type

Barbecue Grill



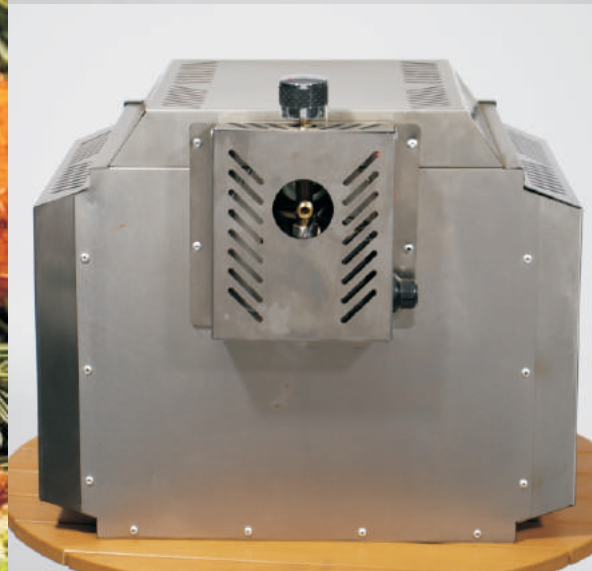
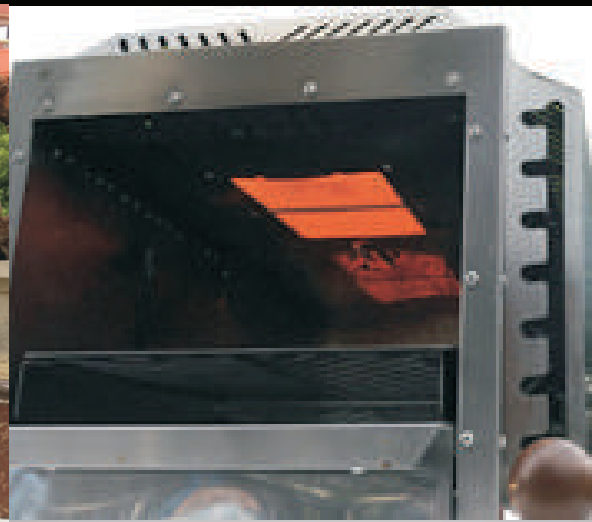
SKU: NPG-5

- Product : Outdoor Infrared Burner Beef Barbecue Grill
- Cooking Area: 13×13" (33cm×33cm)
- Warm-up time: 1-3 mins
- Max temp: 1292°F (700°C)(test)
- Fuel Type: Gas
- Product Size: 19.9×21.7×11.8" (50.6cm×55.1cm×30cm)
- Net Weight: 37.7lbs (17.12kg)

Desktop Type

Barbecue Grill

SKU: NPG-1



- Product : Portable Infrared Burner Beef Barbecue Grill
- Cooking Area: 13×13" (30.5cm×29.5cm)
- Warm-up time: 1-3 mins
- Max temp: 752°F (400°C)(test)
- Fuel Type: Gas
- Product Size: 19×18×15" (48cm×45cm×38cm)
- Net Weight: 31lbs (14kg)

Desktop Type

Barbecue Grill



SKU: NPG-2

- Product : Portable Infrared Burner Beef Barbecue Grill
- Cooking Area: 10×6" (26cm×16cm)
- Warm-up time: 1-3 mins
- Max temp: 752°F (400°C)(test)
- Fuel Type: Gas
- Product Size: 16×9×17" (39.5cm×22cm×43.5cm)
- Net Weight: 17lbs (7.92kg)

Vertical Type

Barbecue Grill

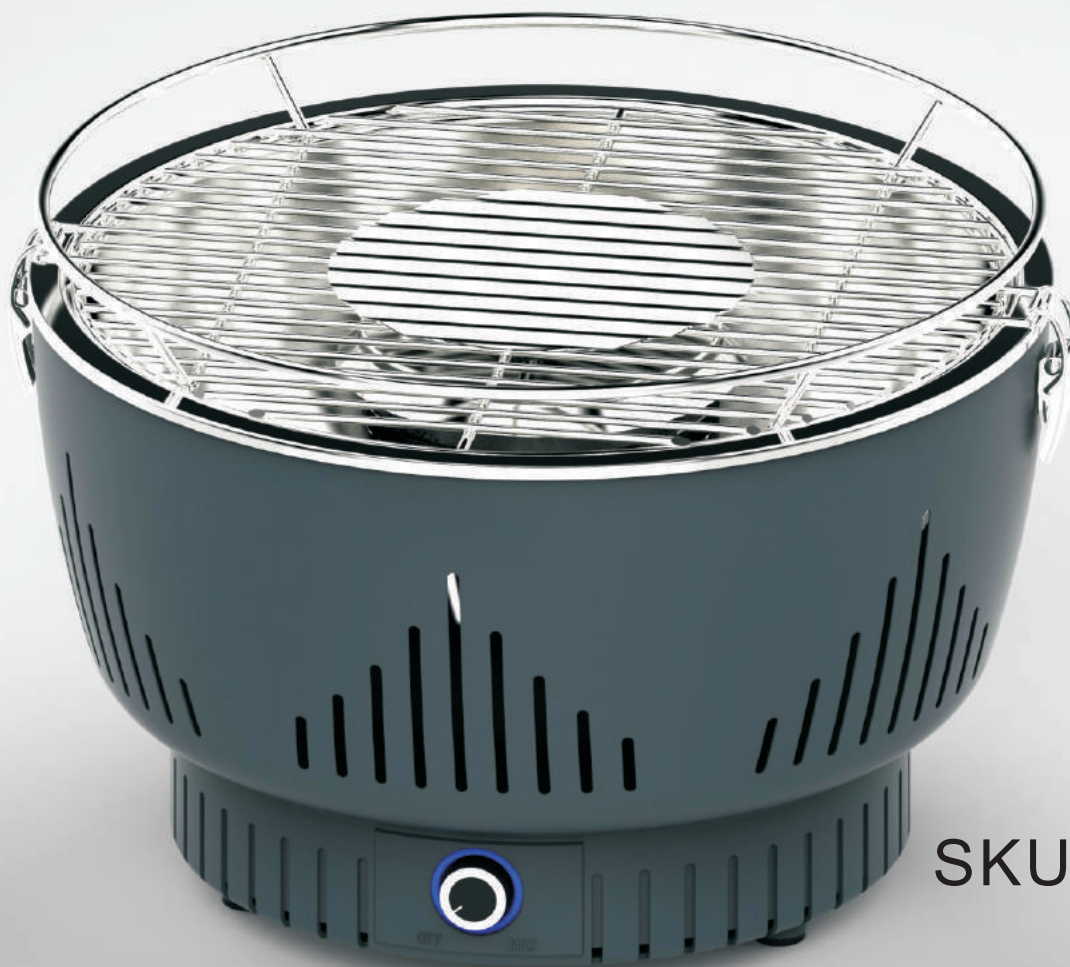


SKU: NPG-3

- Product : Outdoor Desktop/Vertical Type Infrared Burner Beef Barbecue Grill
- Cooking Area: 11.8×11" (30cm×28cm)
- Warm-up time: 1-3 mins
- Max temp: 1292°F (700°C)(test)
- Fuel Type: Gas
- Product Size: 60.7×42.6×17.3" (154cm×108cm×44cm)
- Net Weight: 99lbs (45kg)

Desktop Type

Barbecue Grill



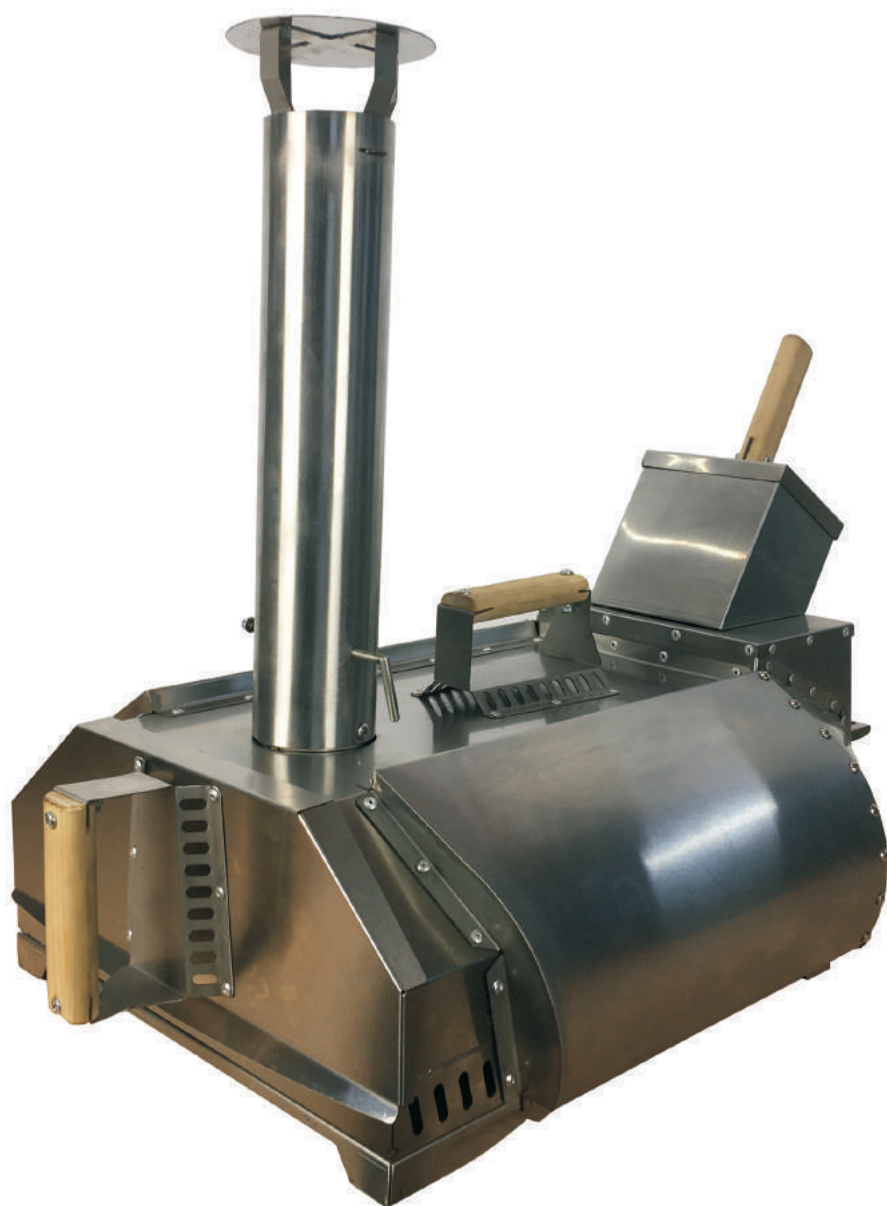
SKU:LHW-1



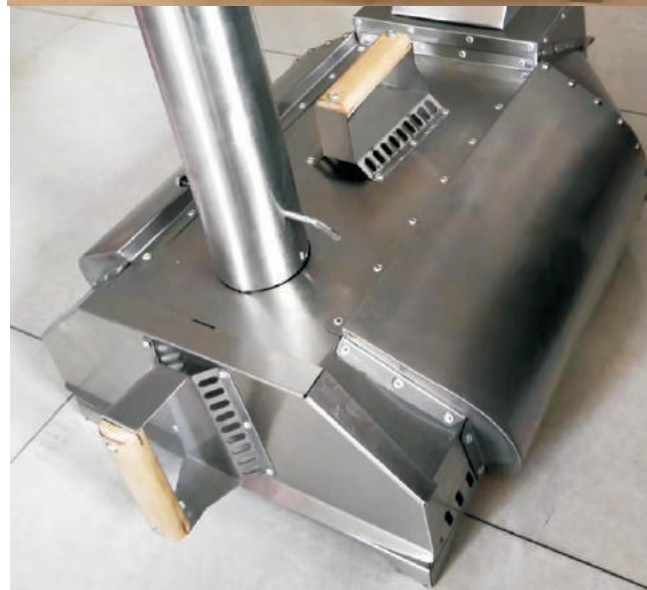
- Product : Portable Smokeless Barbecue Grill Desktop
- Cooking Area: $\Phi 12.5''$ ($\Phi 32$ cm)
- Warm-up time: 10-15 mins
- Max temp: 572°F (300°C)(test)
- Fuel Type: Charcoal
- Product Size: 13.68×13.68×9.3'' (34.75cm×34.75cm×23.82cm)
- Net Weight: 8bs (3.62kg)

Portable Type

Outdoor Pizza Oven



SKU: F16W-1



- Product : Portable Wood-Fired Outdoor Pizza Oven Rear Heating
- Cooking Area: 13×13" (33cm×33cm)
- Warm-up time: 5-15 mins
- Max temp: 572°F (300°C)(test)
- Fuel Type: Wood/Charcoal/Pellet
- Product Size: 20×20×20" (86cm×43cm×58cm)
- Net Weight: 26.86lbs (12.21kg)



NO.3-1



NO.3-2



NO.3D-3



NO.3-3

- Product : Outdoor Pizza Oven
- Cooking Area: 14×18" (34cm×44cm)
- Warm-up time: 10-15 mins
- Max temp.: 1112°F (600°C)(test)
- Fuel Type: Wood/Charcoal/Pellet
- Product Size: 18×20×62" (45cm×50cm×157cm)
- Net Weight: 49.2lbs (22.34kg)

Vertical Type

Pizza Oven



SKU: WSS1200

- Product : 120cm Stainless Steel Wood Fired Pizza Oven
- Cooking Area: 13×13" (80cm×50cm)
- Warm-up time: 3-10 mins
- Max temp: 752°F (400°C)(test)
- Fuel Type: Wood/Charcoal/Pellet
- Product Size: 29.6×47×81.4" (75cm x 120cm x 206.5cm)
- Net Weight: 31lbs (125kg)

Free Standing Type

Fire Pit

SKU: FP-W-C-1



- Product : Wood/Pellets/Charcoal BBQ Grill Bowl Fire Pit
- Cooking Area: 17.7×17.7" (45cm×45cm)
- Fuel Type: Wood/Charcoal/Pellet
- Product Size: 23.8×23.8×16.4" (60.5cm x 60.5cm x 41.7cm)
- Net Weight: 24.2 lbs (10.97kg)

Free Standing Type

Fire Pit

SKU: FP-G-C-1



- Product : Gas Type BBQ Grill Bowl Fire Pit
- Cooking Area: 17.7×17.7" (45cm×45cm)
- Fuel Type: Gas
- Product Size: 23.8×23.8×16.4" (60.5cm x 60.5cm x 41.7cm)
- Net Weight: 47 lbs (21.35kg)

OUR ADVANTAGES

36-Years' Experience

Ovendesign founded in 2020. Designer Wong has 36-Years' Experience in BBQ design and mass production.

48 Professional Factories

To ensure the flexibility of mass production, on-time, and on-budget.

20 Office Staffs

Attend to every detail from Order Discussion, Quality Control to Export Documentation.

OEM&ODM

Offer OEM/ODM service with custom logo. Also stock products with custom logo.

CONTACT US

WEB:

www.ovendesigns.com

EMAIL:

ovendesigns@ovendesigns.com

TEL:

+86-0757-81027077

WORKING TIME:

Monday - Friday: 8 :30am - 5:30pm GMT+8

OFFICE:

No.1 West Of The Second Floor Of Lian Hao Tong Logistics Building, Chongmin West Road, Chongnan, Xiqiao Town, Nanhai District, Foshan, Guangdong, China.